

# Game Changers in Clinical Trials: The Power of Top-Performing Project Managers

Understanding what sponsors value most to effectively run their clinical trials is essential to a successful CRO partnership. At Worldwide Clinical Trials (Worldwide), as part of our ongoing commitment to continuous improvement and innovation, we recently conducted a survey with 140 key clinical decision-makers, who came from various company sizes and geographical locations, to determine respondent satisfaction ratings for key clinical development services. Our research showed that project management, a critical factor in clinical trial success, had the highest satisfaction rating among CROs like Worldwide.

## Respondent Satisfaction Ratings for Key Clinical Development Services

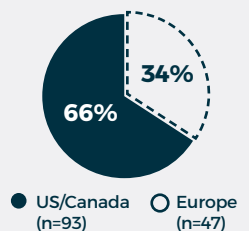
Clinical Development Services	Midsize CROs	Large CROs
Project Management	<b>82%</b> ↑	67%
Study Reporting	<b>76%</b> ↑	72%
Data Management	74%	76%
Regulatory Services	74%	76%
Study Design	<b>74%</b> ↑	69%
Site Start-Up	<b>73%</b> ↑	69%
Site Selection	<b>73%</b> ↑	71%
Patient Recruitment	<b>72%</b> ↑	69%
Quality Assurance	<b>71%</b>	71%
Medical Monitoring	67%	69%
Biostatistics	63%	66%

Midsize vs Large CRO Scorecard

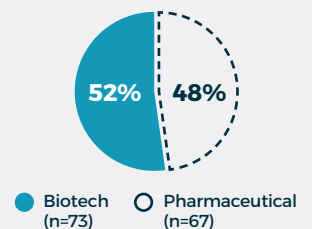
\* Bolded items represent services midsize CROs perform equal to or greater than large CROs

## Respondent Profile (N=140)

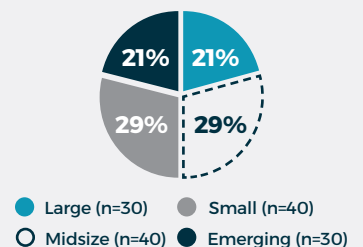
### Regional Representation



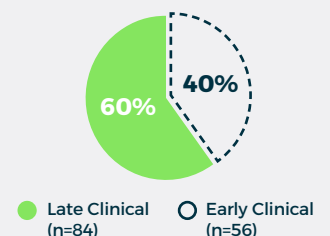
### Company Type



### Company Size



### Development Stage



# Why High-Performing Project Managers Are Needed Now More Than Ever

As clinical trials become increasingly complex, clinical development programs have a greater need for strategic planning and adaptability from project managers. Several aspects that factor into the shifting market include:



## Scientific and technological advancements

The rapid pace of these innovations leads to more complex study designs.



## Personalized medicine

The growing emphasis on targeting niche patient populations based on genetic markers, for example, can be challenging for patient recruitment.



## Regulatory requirements

Regulatory bodies are always changing their requirements for clinical trial data collection, analysis, and reporting.



## Globalization of clinical trials

Diverse patient populations can expedite recruitment and reduce costs but necessitates cultural considerations, site coordination, and other logistical challenges.



## Patient-centricity

Stakeholders place a greater emphasis on patient experience, engagement, and retention, and implementing these patient-centric practices introduces further operational challenges.

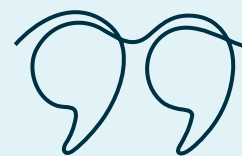
In fact, a recent [study](#) conducted by Price Waterhouse Cooper found that a staggering 97% of organizations recognize the indispensable role of project managers in business performance and organizational success.

At Worldwide, our project management teams understand that clinical development is never a linear process. That is why our project managers are equipped to anticipate and address study-related challenges while adapting to rapidly changing client needs and market shifts. Their expertise helps ensure you meet your clinical study goals.

## What Sets Worldwide's Project Management Apart?

In the [2024 ISR Phase II/III Benchmarking Report](#), Worldwide ranked as the highest-rated service provider for Project Manager Quality, outperforming all other Phase II/III CROs in this attribute. 2024 marks the 11th consecutive year we've been ranked as a top performer by pharma, biotech, and medical device professionals who have worked with us in the last 12 months.

One contributing factor that helps maintain our exceptional project manager quality is that our global project manager turnover rate is significantly below the industry standard, hitting an impressive 7.72% as of April 2024.



I am extremely happy with the quality of the Worldwide project management team. They are fantastic – they are responsive, flexible, and work collaboratively with my internal team.

Sr. Director of Clinical Operations, Clinical-stage Biotech Company, US

At Worldwide, our project managers leverage the following critical skills to drive success in clinical studies:

- Flexibility
- Team leadership
- Robust planning capabilities
- Scope management
- Project ownership
- Superior communication skills
- Budget management



- Resource allocation
- Effective problem-solving skills
- Risk management
- Effective collaboration
- Decision-making skills
- Execution excellence

According to our research, CROs like Worldwide outpaced large CROs in project management quality by 15%. The feedback from our clinical trial sponsors also stated that they believe the leading strengths of our project management team to be the following:

- Agility & flexibility
- Ability to be an extension of the client's team
- Unique sense of ownership
- Dedicated therapeutic expertise
- Responsiveness

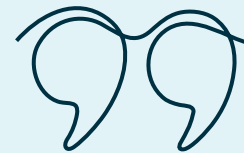
There are several reasons that survey respondents reported as to why they would request an RFP from Worldwide, a majority of them centering around the caliber of our teams.

The top 5 reasons were\*:

- 1 Right-sized for responsive and personalized partnerships
- 2 Therapeutically focused expertise deliberately designed to deliver
- 3 Full-service clinical research capabilities across all phases

- 4 Global reach and scale for all clinical trial needs
- 5 Optimal combination of expertise and responsiveness

\*# of Top-5 Ranks



The project management team assigned to our studies performs well, and we are happy with the stability and quality of the team as well as their proactive management style in identifying and addressing study-related issues.

**Sr. VP of Clinical and Medical Affairs, Midsize Biotech Company, EU**



At Worldwide, project management is a priority – it is critical to the success of every clinical trial and a key part of our culture of quality. Our project management team members are committed to investing time in upfront planning because they know this positions our customers to stay on time and on budget with their clinical research programs. They also understand that clinical development is not a linear process. What sets Worldwide’s project management teams apart is their unique sense of ownership for each and every program and their ability to proactively identify and manage setbacks while keeping the customer’s goals and workflows on track through open, approachable, and honest communication.

**Clare Wallis**

Senior Vice President, Project Management

## Contact Us

At Worldwide, we’re committed to ensuring your clinical program gets the personalized attention it deserves. From our strategic project management expertise to our full-service clinical research capabilities, we’re excited to see our services resonate with sponsors of all sizes.

As clinical trials continue to change, make sure you have a flexible CRO partner who can adapt to the shifting needs of the market, and [contact us](#) today.

This report and the contents within are proprietary to Worldwide Clinical Trials. This report may not be reproduced, distributed, or transmitted, in whole or in part, by any means, including copying, recording, or other electronic methods, without the prior written consent of Worldwide Clinical Trials. Notwithstanding the foregoing, quotes from the report may be embodied in reviews or used for other non-commercial purposes such as press and media outlets without Worldwide Clinical Trial’s prior consent. Any unauthorized reproduction or distribution of this report, in whole or in part, may result in legal action taken by Worldwide Clinical Trials to protect its rights. For permissions or inquiries, please contact: [media@worldwide.com](mailto:media@worldwide.com).

Source: Worldwide Clinical Trials Quantitative Research Study Conducted Via Third-Party Research Partner Q3 2023.



600 Park Offices Drive  
Suite 200  
Research Triangle Park, NC 27709  
USA  
Tel: +1 610-632-8150

Worldwide Clinical Trials (Worldwide) is a leading full-service global contract research organization (CRO) that works in partnership with biotechnology and pharmaceutical companies to create customized solutions that advance new medications – from discovery to reality. Anchored in our company’s scientific heritage, we are therapeutically focused on cardiovascular, metabolic, neuroscience, oncology, and rare diseases. Our deep therapeutic knowledge enables us to develop flexible plans and quickly solve problems for our customers.