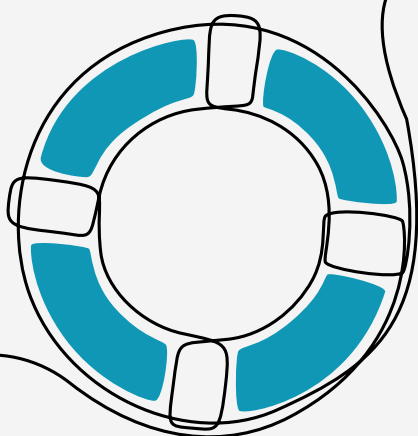
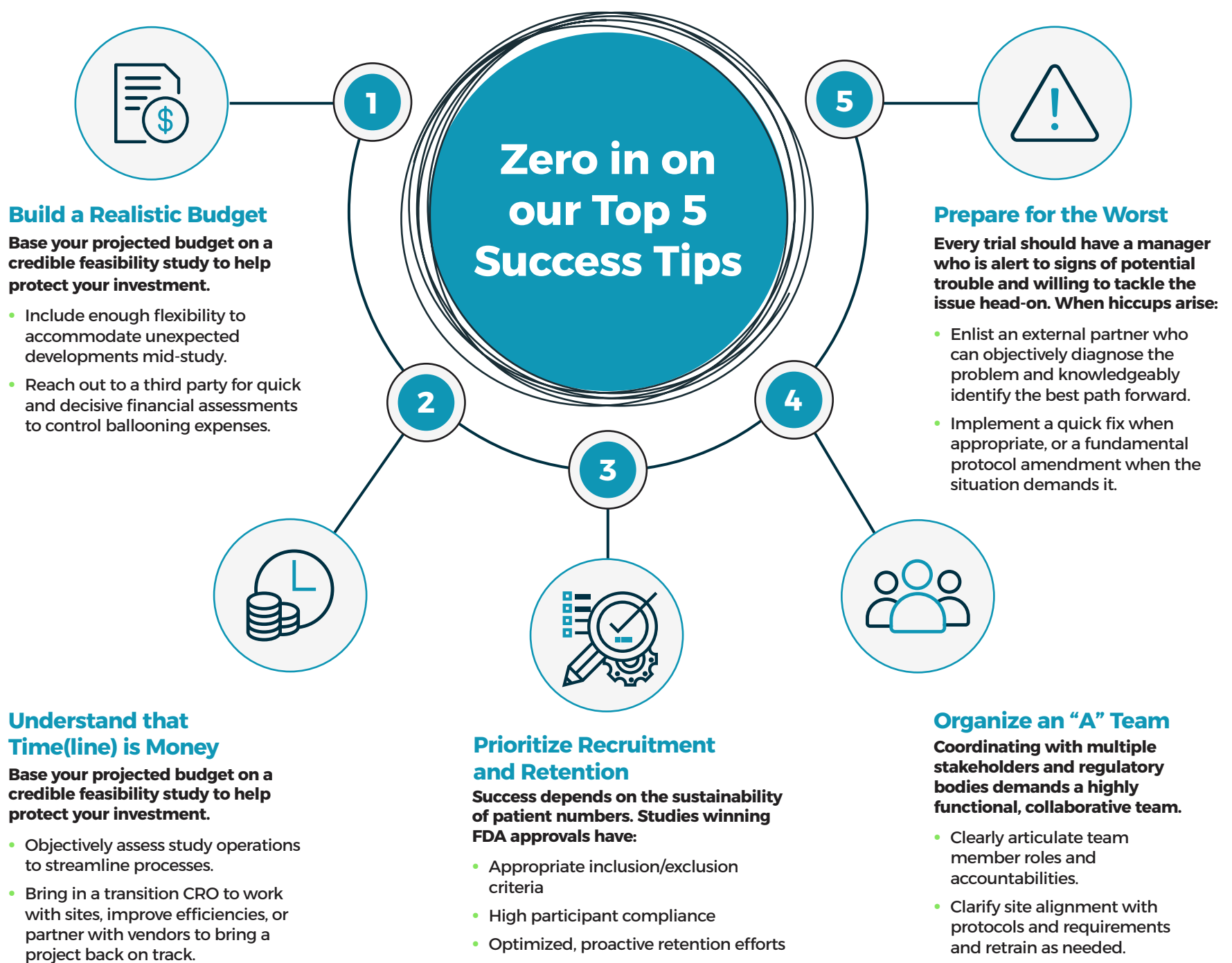


From Setback to Comeback: Five Strategies to Course Correct Your Clinical Trial



No matter your trial's focus or phase of development, it's crucial to recognize areas that may require realignment. How do you turn an at-risk study into a successful clinical trial?



Don't wait until it's too late.

Are you missing important goals and milestones? Is there a lack of communication and support for your trial? Are you worried about your clinical program?

Getting outside help may be the best investment you make in your clinical trial.

Make sure intervention is swift to keep your study within its timelines, while at the same time maintaining regulatory compliance and high data quality.